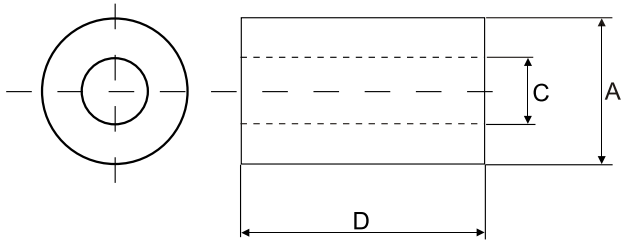


◆ RH (EMI Cores)



- APPLICATIONS:
1. Rid a circuit of EMI.
 2. Referred to RFI.
 3. Internal and external computer data power cables.
 4. Noise choke.

Type	Dimension(mm)			Type	Dimension(mm)		
	A	C	D		A	C	D
RH1.8*0.5*3.5	1.8±0.15	0.5±0.1	3.5±0.2	RH16.1*7.9*20	16.1±0.5	7.9±0.4	20.0±0.6
RH2*0.8*3.5	2.0±0.15	0.8±0.1	3.5±0.2	RH17.5*9.5*27	17.5±0.5	9.5±0.4	27.0±0.6
RH2.5*0.8*5	2.5±0.15	0.8±0.1	5.0±0.2	RH17*5.7*20	17.0±0.4	5.7±0.3	20.0±0.6
RH2.5*0.85*5	2.5±0.15	0.85±0.1	5.0±0.2	RH18.4*12.5*28	18.2±0.5	9.6±0.4	12.0±0.3
RH3.2*1.3*3.5	3.2±0.15	1.3±0.15	3.5±0.2	RH18.4*9.5*28	18.4±0.5	9.5±0.4	28.0±0.8
RH3.5*0.9*6	3.5±0.15	0.9±0.1	6.0±0.3	RH20*6.5*20	20.0±0.5	6.5±0.4	20.0±0.6
RH3.5*1*6	3.5±0.15	1.0±0.1	6.0±0.3	RH26*13*28	26.0±0.6	13.0±0.4	28.0±0.8
RH3.5*1.2*6	3.5±0.15	1.2±0.15	6.0±0.3	RH28.5*13.8*28.5	28.5±0.8	13.8±0.4	28.5±0.8
RH3.5*1.5*3.5	3.5±0.15	1.5±0.15	3.5±0.2				
RH3.5*1.3*3.5	3.5±0.15	1.3±0.15	3.5±0.2				
RH3.5*1.8*3.5	3.5±0.15	1.8±0.15	3.5±0.2				
RH4*1.5*8	4.0±0.2	1.5±0.15	8.0±0.3				
RH4*1.6*15	4.0±0.2	1.6±0.15	15.0±0.5				
RH5*3*10	5.0±0.2	3.0±0.15	10.0±0.3				
RH5*1.5*11	5.0±0.2	1.5±0.15	11.0±0.3				
RH5*1.58*11	5.0±0.2	1.58±0.15	11.0±0.3				
RH5*2*6.5	5.0±0.2	2.0±0.15	6.5±0.3				
RH6*1*6	6.0±0.2	1.0±0.1	6.0±0.3				
RH6*3.6*20	6.0±0.2	3.6±0.15	20.0±0.5				
RH9.8*4.7*25	9.8±0.3	4.7±0.2	25.0±0.7				
RH9.7*4.7*10	9.7±0.3	4.7±0.2	10.0±0.3				
RH10*6*30	10.0±0.3	6.0±0.3	30.0±1.0				
RH10.5*5.6*20	10.5±0.3	5.6±0.3	20.0±0.6				
RH12*5.6*20	12.0±0.3	5.6±0.3	20.0±0.6				
RH12.4*7.6*14.6	12.4±0.3	7.6±0.3	14.6±0.5				
RH12.7*8.1*12.7	12.7±0.3	8.1±0.3	12.7±0.3				
RH13.9*7.2*15	13.9±0.4	7.2±0.3	15.0±0.5				
RH13*5.5*13.5	13.0±0.3	5.5±0.3	13.5±0.4				
RH14.2*6.35*28.5	14.2±0.4	6.35±0.3	28.5±0.8				
RH14*6.35*28	14.0±0.4	6.35±0.3	28.0±0.8				
RH14*8.3*23	14.0±0.4	8.3±0.3	23.0±0.6				
RH14.2*6.75*28.5	14.2±0.4	6.75±0.3	28.5±0.8				
RH14.2*7.2*28.5	14.2±0.4	7.2±0.3	28.5±0.8				